

2ND GENERATION CORNER RETAIL 22ND & E BURNSIDE

» FOR LEASE «



ADDRESS

2205 E Burnside Street, Portland Oregon

AVAILABLE SPACE

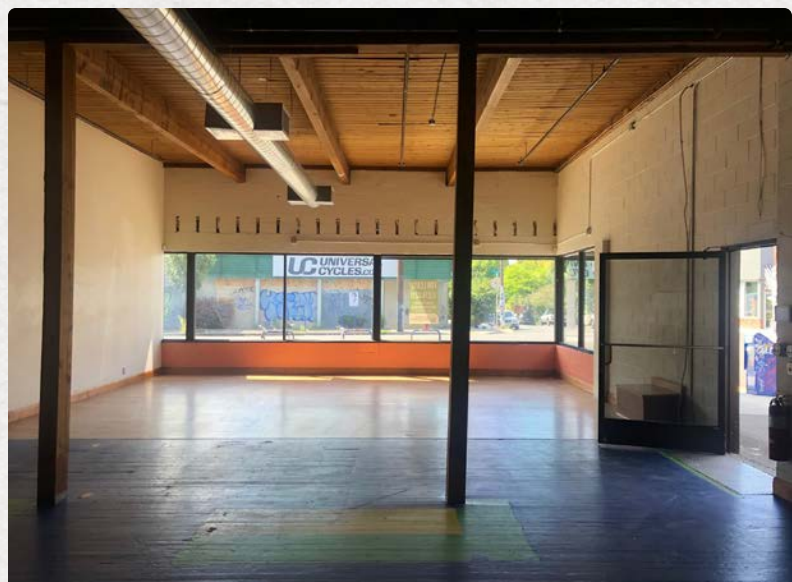
1,788 RSF corner end-cap (22nd & E Burnside) and basement storage space available

ASKING RENT

\$26.00/SF/YR, NNN (approximately \$8.00/SF/YR)
Optional storage space: \$555/Month

HIGHLIGHTS

- Excellent 2nd generation corner retail opportunity in close-in eastside
- Basement storage space available (clean/dry)
- Neighboring tenants include The Standard, Heart Coffee, and Davenport
- Available now!



Walk Score

96

Bike Score

98

Transit Score

72

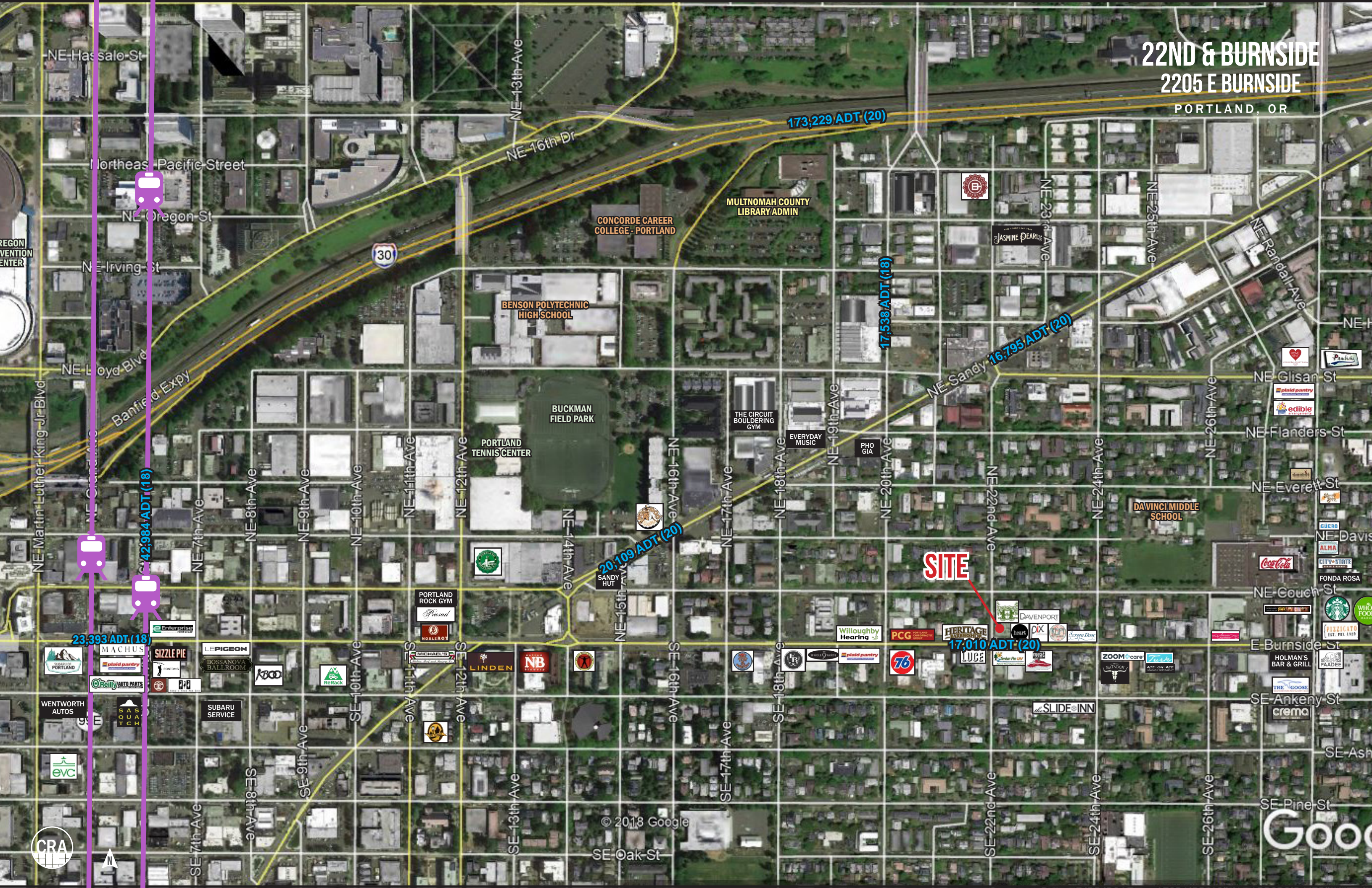


COMMERCIAL
REALTY ADVISORS
NORTHWEST LLC

Ashley Heichelbech | ashley@cra-nw.com
Kathleen Healy | kathleen@cra-nw.com

503.274.0211
www.cra-nw.com

22ND & BURNSIDE 2205 E BURNSIDE PORTLAND, OR



NE-13th-Ave

NE-16th-Dr

173,229 ADT (20)

17,538 ADT (18)

NE Sandy-16,795 ADT (20)

20,109 ADT (20)

SITE

17,010 ADT (20)

23,393 ADT (18)

42,984 ADT (18)

NE-Hassalo-St

Northeast Pacific Street

NE Oregon St

NE Irving St

NE Lloyd Blvd

Banfield Expy

NE Martin Luther King Jr Blvd

NE-7th-Ave

NE-8th-Ave

NE-9th-Ave

NE-10th-Ave

NE-11th-Ave

NE-12th-Ave

NE-14th-Ave

NE-16th-Ave

NE-17th-Ave

NE-18th-Ave

NE-19th-Ave

NE-20th-Ave

NE-22nd-Ave

NE-24th-Ave

NE-26th-Ave

NE-Randall-Ave

NE Glisan St

NE Flanders St

NE Everett St

NE-Davis

NE Couch St

E Burnside St

SE Ankeny St

SE Ash

SE Pine St

SE-13th-Ave

SE-16th-Ave

SE-17th-Ave

SE-18th-Ave

SE-22nd-Ave

SE-24th-Ave

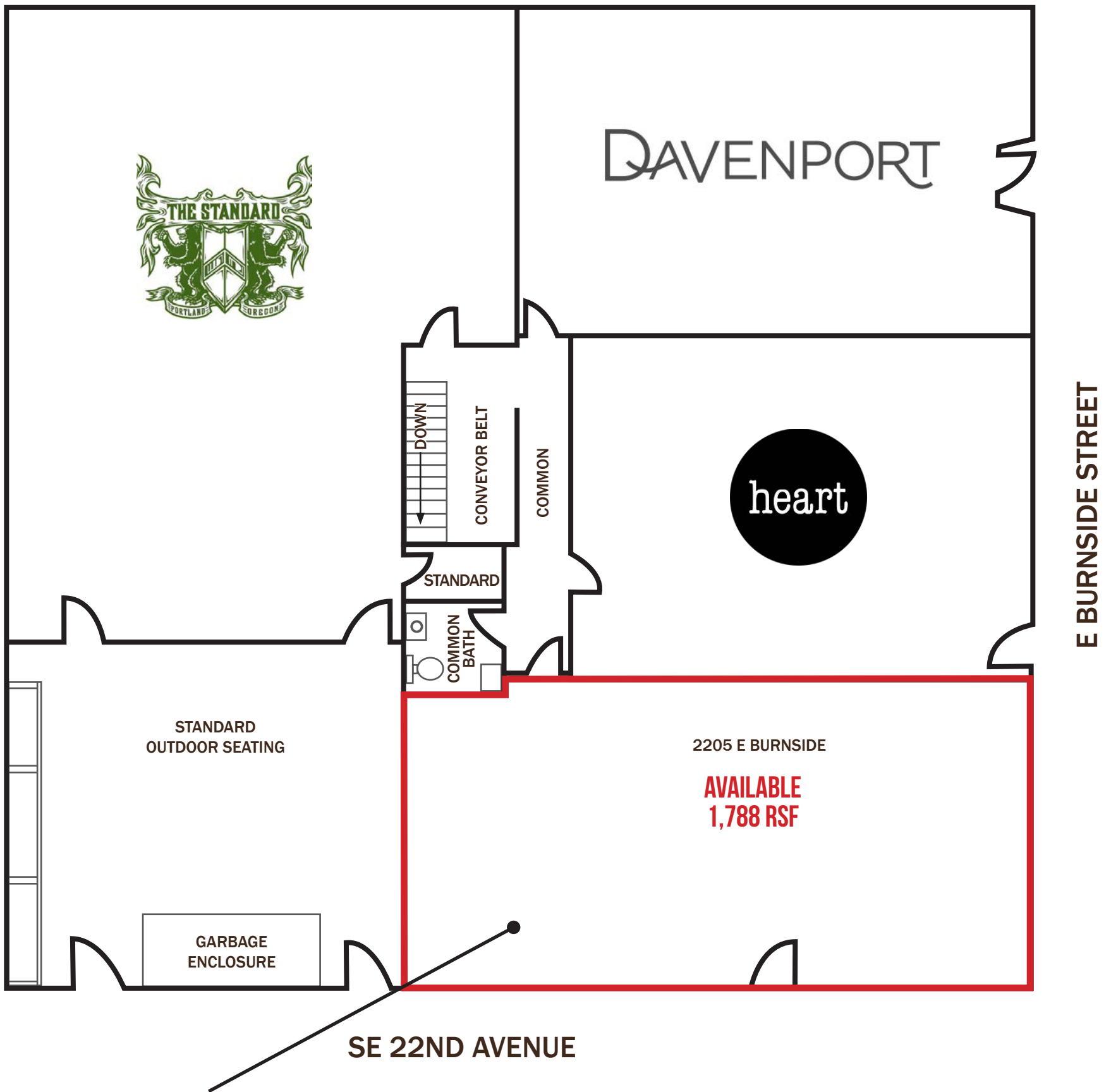
SE-26th-Ave

© 2018 Google

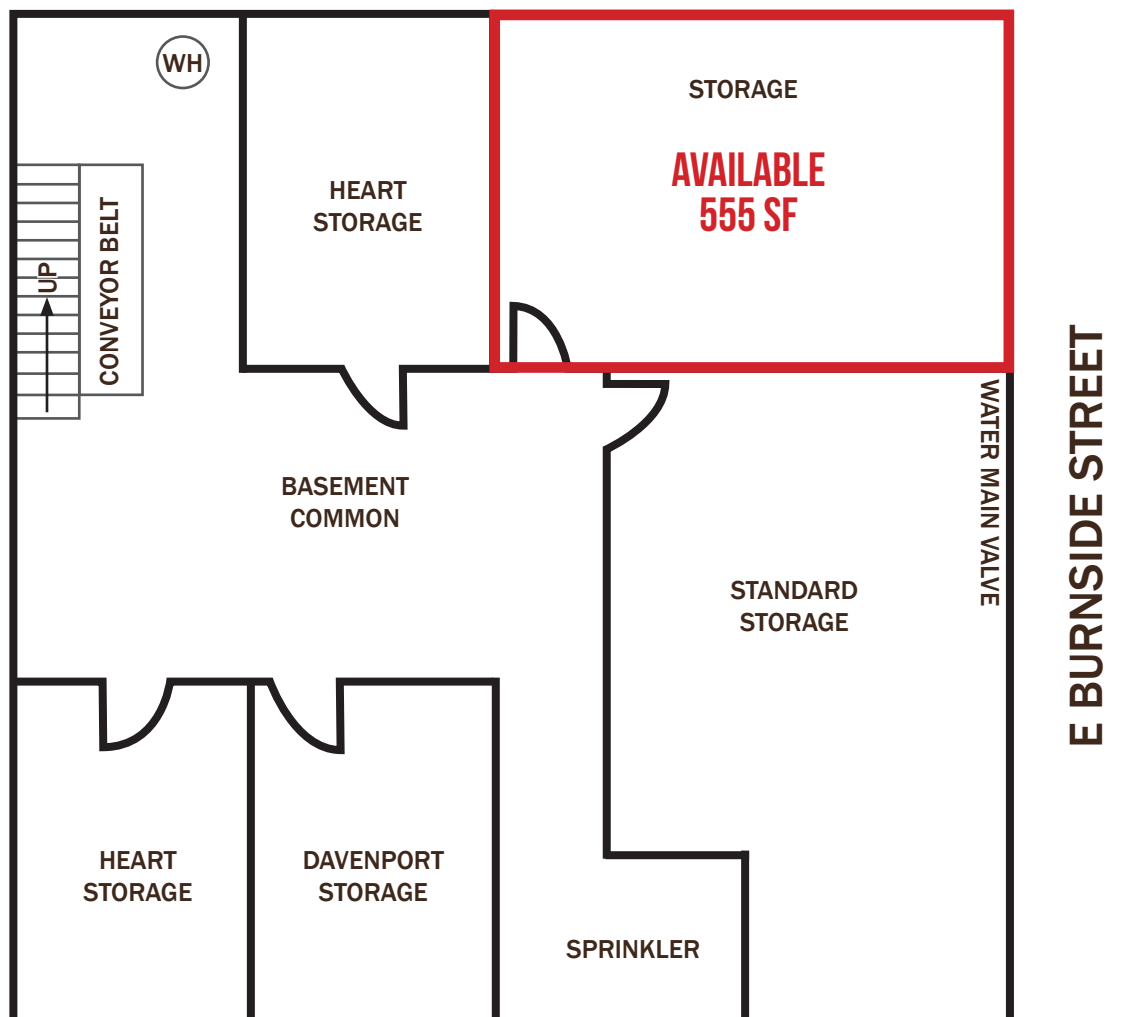
SE Oak St

Google





EXCLUSIVE AREA	1,510 SF
SHARE OF COMMON	278 SF
RENTABLE SQ FT	1,788 SF



22ND & BURNSIDE

2205 E BURNSIDE

PORTLAND, OR

DEMOGRAPHIC SUMMARY

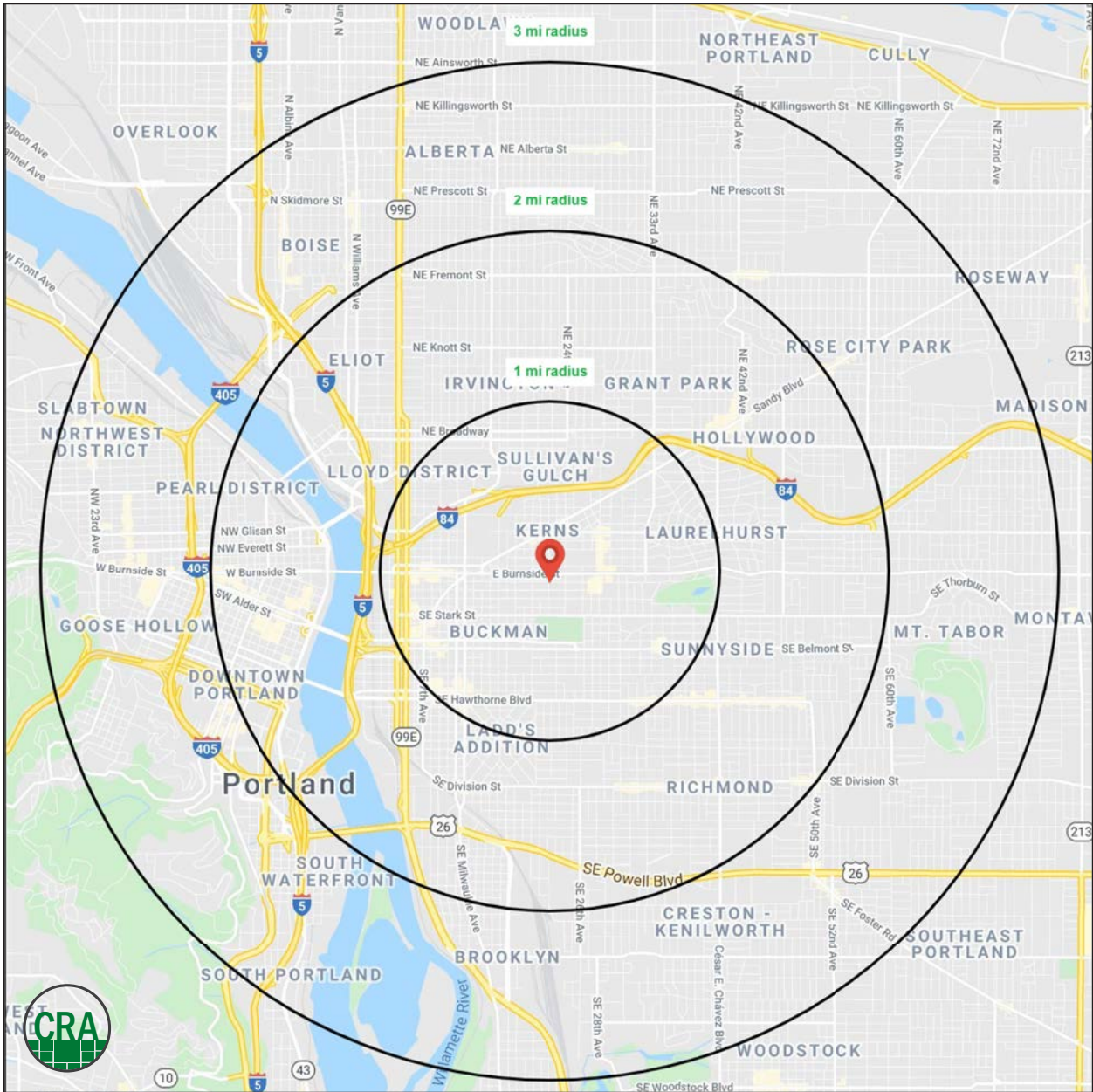
Source: Regis - SitesUSA (2020)	1 MILE	2 MILE	3 MILE
Estimated Population 2020	34,745	116,750	254,280
Projected Population 2025	35,456	118,827	258,572
Average HH Income	\$86,878	\$104,496	\$102,343
Median Home Value	\$564,363	\$573,812	\$533,885
Daytime Demographics 16+	44,430	191,537	348,871
Some College or Higher	87.8%	87.3%	86.4%

\$564,363

Median Home Value
1 MILE RADIUS

34.9

Median Age
1 MILE RADIUS



SUMMARY PROFILE

2000-2010 Census, 2020 Estimates with 2025 Projections

Calculated using Weighted Block Centroid from Block Groups



Lat/Lon: 45.523/-122.6433

RS1

2205 E Burnside St		1 mi radius	2 mi radius	3 mi radius
Portland, OR 97214				
POPULATION	2020 Estimated Population	34,745	116,750	254,280
	2025 Projected Population	35,456	118,827	258,572
	2010 Census Population	26,823	97,260	210,274
	2000 Census Population	25,559	87,819	194,069
	Projected Annual Growth 2020 to 2025	0.4%	0.4%	0.3%
	Historical Annual Growth 2000 to 2020	1.8%	1.6%	1.6%
HOUSEHOLDS	2020 Median Age	34.9	36.8	36.6
	2020 Estimated Households	19,337	60,159	130,840
	2025 Projected Households	20,284	63,249	137,834
	2010 Census Households	14,196	47,731	103,020
	2000 Census Households	13,517	42,398	92,668
	Projected Annual Growth 2020 to 2025	1.0%	1.0%	1.1%
RACE AND ETHNICITY	Historical Annual Growth 2000 to 2020	2.2%	2.1%	2.1%
	2020 Estimated White	81.5%	80.1%	78.0%
	2020 Estimated Black or African American	4.4%	5.7%	6.6%
	2020 Estimated Asian or Pacific Islander	3.9%	5.1%	6.4%
	2020 Estimated American Indian or Native Alaskan	1.3%	1.0%	0.9%
	2020 Estimated Other Races	8.9%	8.0%	8.1%
INCOME	2020 Estimated Hispanic	13.3%	10.2%	9.3%
	2020 Estimated Average Household Income	\$86,878	\$104,496	\$102,343
	2020 Estimated Median Household Income	\$68,270	\$78,812	\$76,901
EDUCATION (AGE 25+)	2020 Estimated Per Capita Income	\$48,703	\$54,361	\$53,051
	2020 Estimated Elementary (Grade Level 0 to 8)	1.1%	1.2%	1.6%
	2020 Estimated Some High School (Grade Level 9 to 11)	1.5%	2.2%	2.2%
	2020 Estimated High School Graduate	9.6%	9.3%	9.8%
	2020 Estimated Some College	19.1%	18.3%	18.4%
	2020 Estimated Associates Degree Only	6.0%	6.0%	6.1%
	2020 Estimated Bachelors Degree Only	40.2%	37.3%	36.4%
BUSINESS	2020 Estimated Graduate Degree	22.5%	25.7%	25.6%
	2020 Estimated Total Businesses	4,142	15,837	25,733
	2020 Estimated Total Employees	36,997	163,752	285,987
	2020 Estimated Employee Population per Business	8.9	10.3	11.1
	2020 Estimated Residential Population per Business	8.4	7.4	9.9

This report was produced using data from private and government sources deemed to be reliable. The information herein is provided without representation or warranty.

For more information, please contact:

ASHLEY HEICHELBECH 503.490.7212 | ashley@cra-nw.com

KATHLEEN HEALY 503.880.3033 | kathleen@cra-nw.com



KNOWLEDGE

RELATIONSHIPS

EXPERIENCE



**COMMERCIAL
REALTY ADVISORS
NORTHWEST LLC**

Licensed brokers in Oregon & Washington

 733 SW Second Avenue, Suite 200 • Portland, Oregon 97204



www.cra-nw.com



503.274.0211

The information herein has been obtained from sources we deem reliable. We do not, however, guarantee its accuracy. All information should be verified prior to purchase/leasing. View the Real Estate Agency Pamphlet by visiting our website, www.cra-nw.com/home/agency-disclosure.html. CRA PRINTS WITH 30% POST-CONSUMER, RECYCLED-CONTENT MATERIAL.